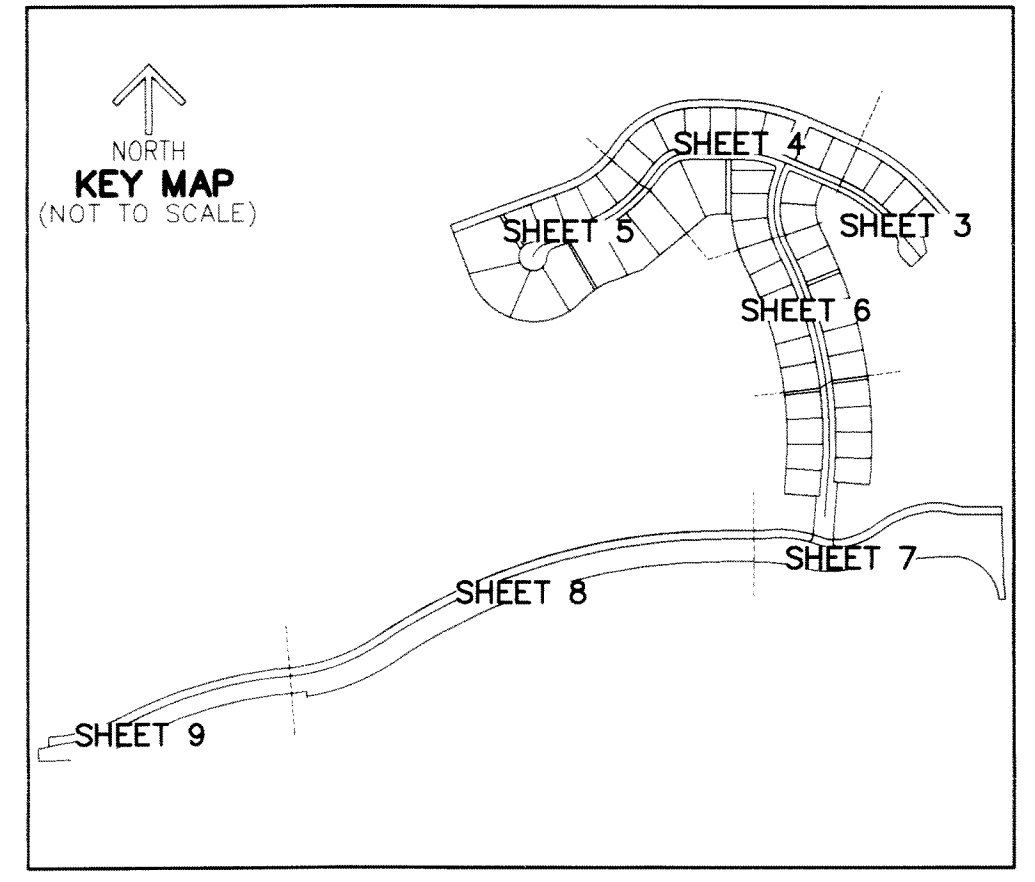


PANTHER NATIONAL AT AVENIR POD 14

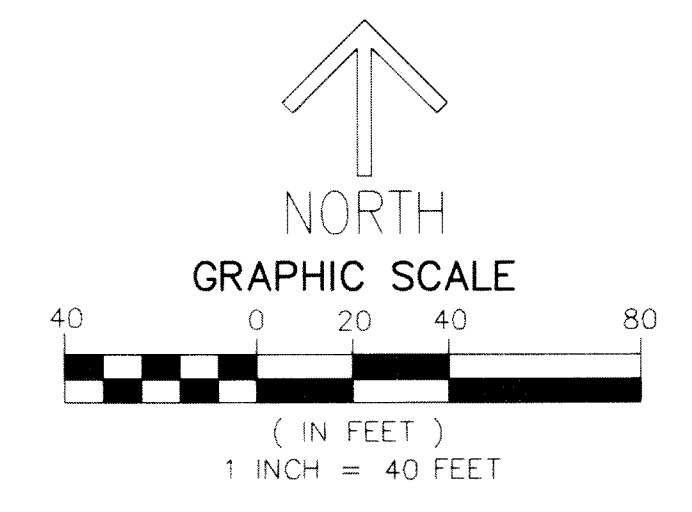
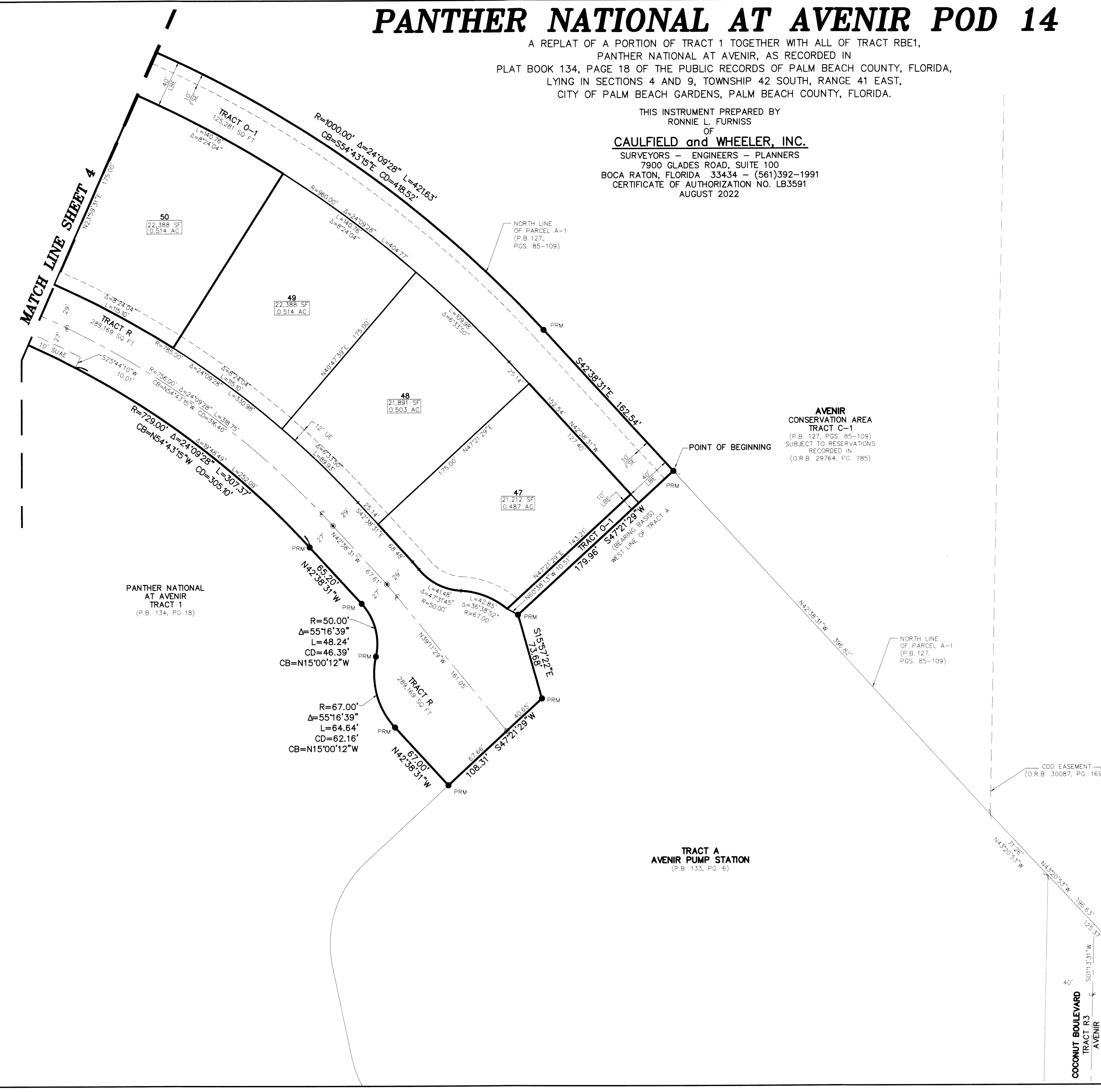
A REPLAT OF A PORTION OF TRACT 1 TOGETHER WITH ALL OF TRACT RBE1, PANTHER NATIONAL AT AVENIR, AS RECORDED IN PLAT BOOK 134, PAGE 18 OF THE PUBLIC RECORDS OF PALM BEACH COUNTY, FLORIDA, LYING IN SECTIONS 4 AND 9, TOWNSHIP 42 SOUTH, RANGE 41 EAST, CITY OF PALM BEACH GARDENS, PALM BEACH COUNTY, FLORIDA.

THIS INSTRUMENT PREPARED BY
RONNIE L. FURNISS
OF
CAULFIELD and WHEELER, INC.
SURVEYORS - ENGINEERS - PLANNERS
7900 GLADES ROAD, SUITE 100
BOCA RATON, FLORIDA 33434 - (561)392-1991
CERTIFICATE OF AUTHORIZATION NO. LB3591
AUGUST 2022



103

SHEET 3 OF 9



- LEGEND/ABBREVIATIONS**
- CL - CENTERLINE
 - Δ - DELTA (CENTRAL ANGLE)
 - AC - ACRES
 - CB - CHORD BEARING
 - CD - CHORD DISTANCE
 - DE - DRAINAGE EASEMENT
 - FSE - FIRE SAFETY ACCESS EASEMENT
 - L - ARC LENGTH
 - LMAE - LAKE MAINTENANCE ACCESS EASEMENT
 - LAE - LIMITED ACCESS EASEMENT
 - LB - LICENSED BUSINESS
 - LBE - LANDSCAPE BUFFER EASEMENT
 - LSE - LIFT STATION EASEMENT
 - O.R.B. - OFFICIAL RECORD BOOK
 - P.B. - PLAT BOOK
 - R - RADIUS
 - PG./PGS. - PAGE/PAGES
 - O-1 - OPEN SPACE TRACT 1
 - (NR) - INDICATES NON RADIAL LINE
 - RBE - ROADWAY BUFFER EASEMENT
 - SF - SQUARE FEET
 - UE - UTILITY EASEMENT
 - SUAE - SEACOAST UTILITY AUTHORITY EASEMENT
 - 8-42-41 - SECTION 8, TOWNSHIP 42 SOUTH, RANGE 41 EAST
 - P.P.A.E. - PERPETUAL PUBLIC ACCESS EASEMENT
 - PC - POINT OF CURVATURE
 - PT - POINT OF TANGENCY
 - PNT - POINT OF NON-TANGENCY
 - PRC - POINT OF REVERSE CURVATURE
 - CDD - COMMUNITY DEVELOPMENT DISTRICT
 - PBC - PALM BEACH COUNTY
 - PCP - SET PERMANENT CONTROL POINT NAIL AND DISK STAMPED "C&W LB 3591"
 - PRM - SET PERMANENT REFERENCE MONUMENT SET 5/8" IRON ROD WITH CAP STAMPED "C&W LB 3591"
 - PRM - FOUND PERMANENT REFERENCE MONUMENT 4" x 4" x 24" CONCRETE MONUMENT WITH DISK STAMPED "PRM LB 3591"
 - ✱ - 1/4 SECTION CORNER
 - ✱ - SECTION CORNER

EAST LINE OF SECTION 9-42-41
WEST LINE OF SECTION 10-42-41

COCONUT BOULEVARD
TRACT R3
AVENIR
(P.B. 127, PGS. 85-109)

AVENIR
PARCEL A-2
(P.B. 127, PGS. 85-109)

PANTHER NATIONAL
AT AVENIR
TRACT 1
(P.B. 134, PG. 18)

TRACT A
AVENIR PUMP STATION
(P.B. 133, PG. 6)

AVENIR
CONSERVATION AREA
TRACT C-1
(P.B. 127, PGS. 85-109)
SUBJECT TO RESERVATIONS
RECORDED IN
(O.R.B. 29764, PG. 785)

NORTH LINE
OF PARCEL A-1
(P.B. 127,
PGS. 85-109)

NORTH LINE
OF PARCEL A-1
(P.B. 127,
PGS. 85-109)